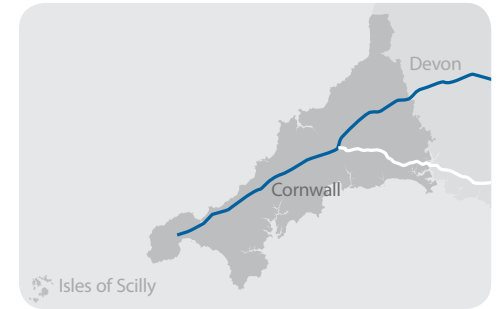


A30 Route Based Strategy 2015 - 2050



Working in partnership with Cornwall Council on further improvements to the A30 to support Cornwall's economic growth.



Overarching objective

To achieve 'Expressway' standard by 2020

- Restricting private accesses
- Reducing centre reserve crossings
- Use of CCTV
- Use of intelligent infomatics

Wider connectivity

- A30 / A303 improvements and connections to West England, the South and London.

Plusha to Temple 4

Status: Improve safety
Objective: Close centre reserve gaps
Output: Review to Expressway standards
Cost: TBA

D

A30 Helland Cattle Crossing 5

Status: Feasibility in 2018/19
Objective: Safety
Output: New bridge
Cost: £2m

C

Blue Anchor Junction 6

Status: Feasibility review of e/b and w/b junctions
Objective: Safety
Output: Junction improvement
Cost: TBA

D

Chiverton to Carland Cross 7

Status: Year: 2017-2022
Objective: Grade separated junctions. Central reservation and access road rationalisation. Enables Local Plan growth of 48,000 houses
Output: Dualling of 14km of carriageway to dual carriageway standard.
Cost: £300m

A

Launceston - Pennygillam 1

Status: e/b off slip improvements including junction signalisation
Objective: Capacity
Output: Feasibility
Cost: £2.3m

E

Delivery timescale

- For delivery in RIS 1 (2015 - 2020)
- For delivery in RIS 2 (2020 - 2025)
- For delivery in RIS 2 and beyond

Key

- Community Network Area total future housing allocation
- Population
- RIS 2
- RIS 3
- Designated Funds
- Safety
- Developer led/grant funded

Two bridges 2

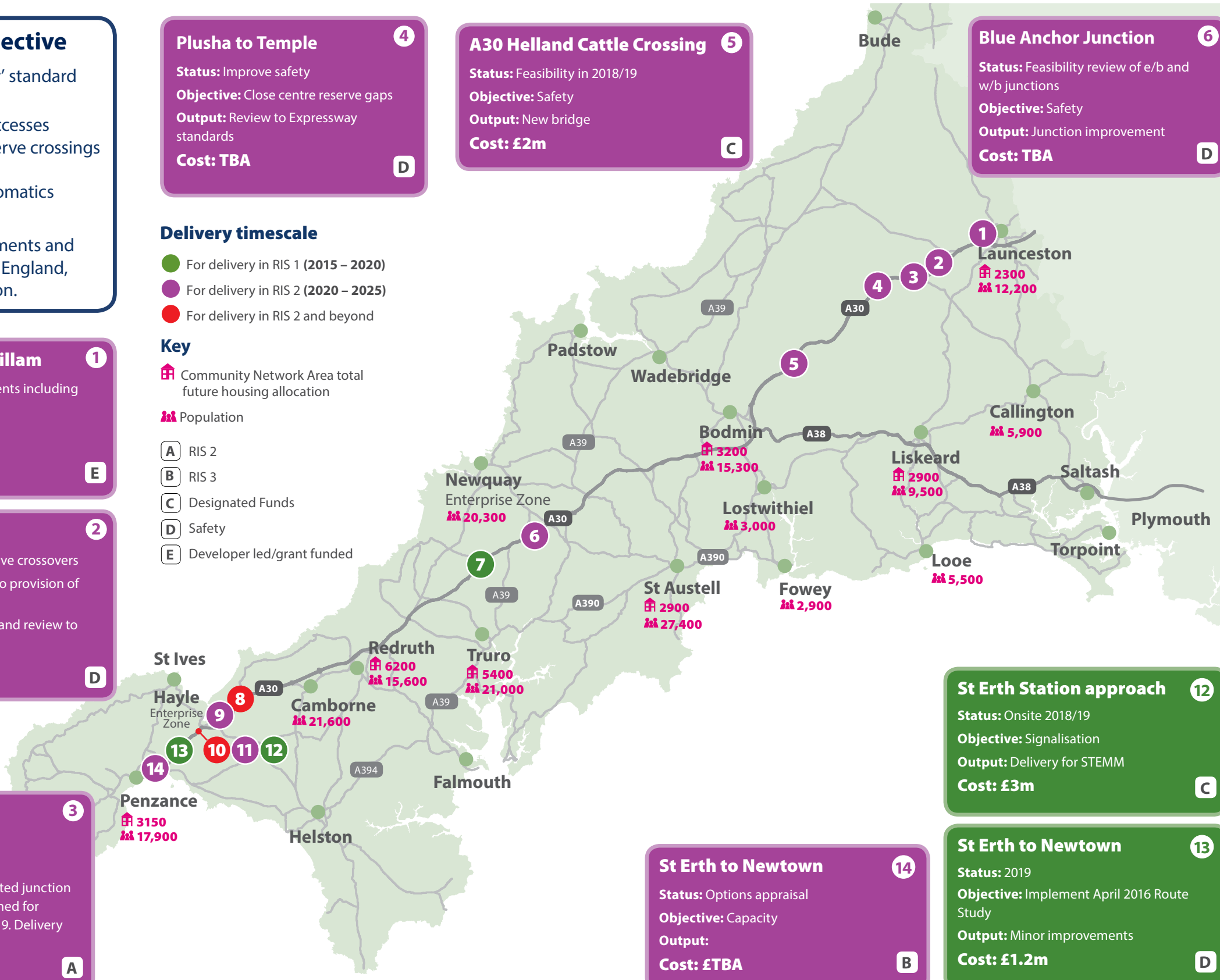
Status: Closure of centre reserve crossovers
Objective: Safety and linked to provision of Plusha junction
Output: Safety improvement and review to expressway standard
Cost: TBA

D

Plusha Junction 3

Status: Improve safety
Objective: Safety
Output: Provide grade separated junction and local road links. Programmed for further development in 2018/19. Delivery proposed 2019/20.
Cost: £12m

A



St Erth Station approach 12

Status: Onsite 2018/19
Objective: Signalisation
Output: Delivery for STEMM
Cost: £3m

C

Tolroy Junction 10

Status: Proposed grade separated junction
Objective: Capacity improvement
Output: New Junction
Cost: £40m

E

St Erth to Newtown 14

Status: Options appraisal
Objective: Capacity
Output:
Cost: £TBA

B

St Erth to Newtown 13

Status: 2019
Objective: Implement April 2016 Route Study
Output: Minor improvements
Cost: £1.2m

D

St Erth roundabout 11

Status: Year 2021
Objective: Signalisation of junction
Output: Needs to be linked to Loggans Moor
Cost: £5m

E