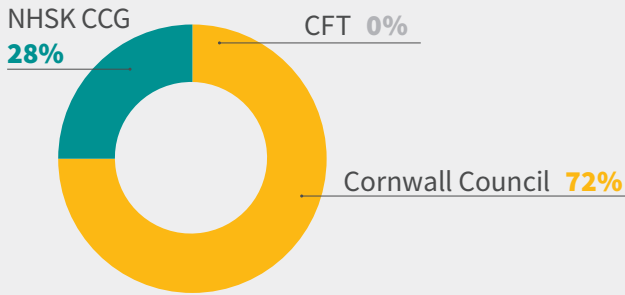


Care Home Market Development

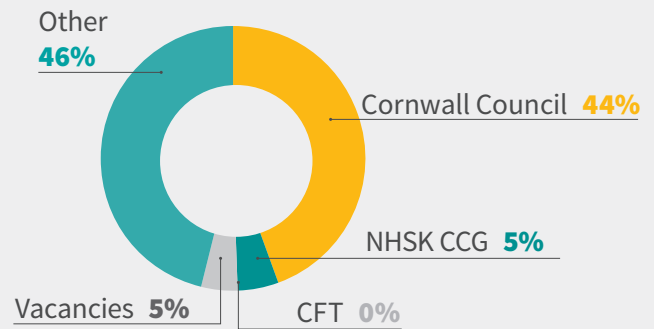
Area D:
Falmouth
and Penryn

Funding split by commissioner

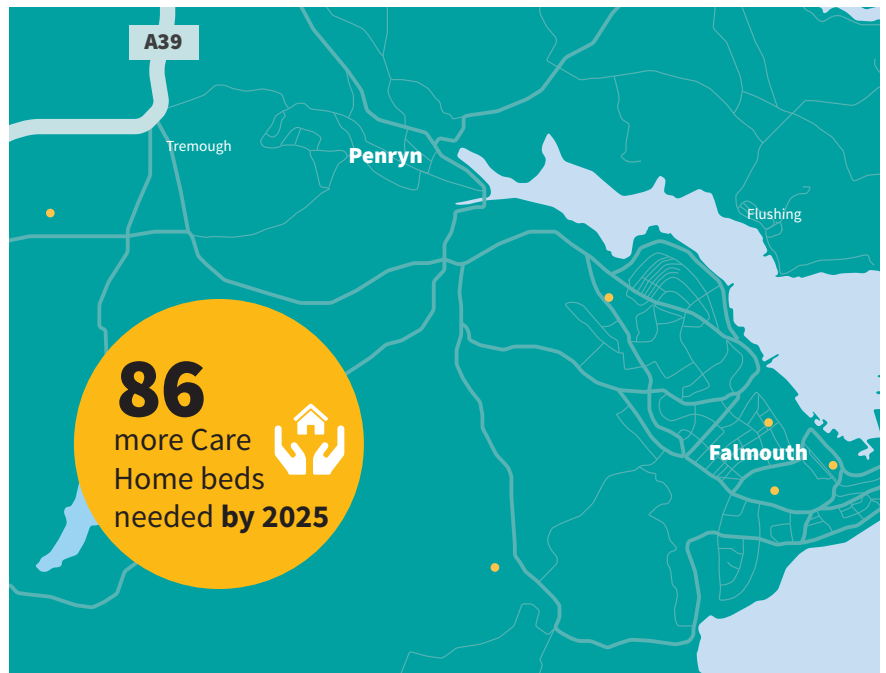
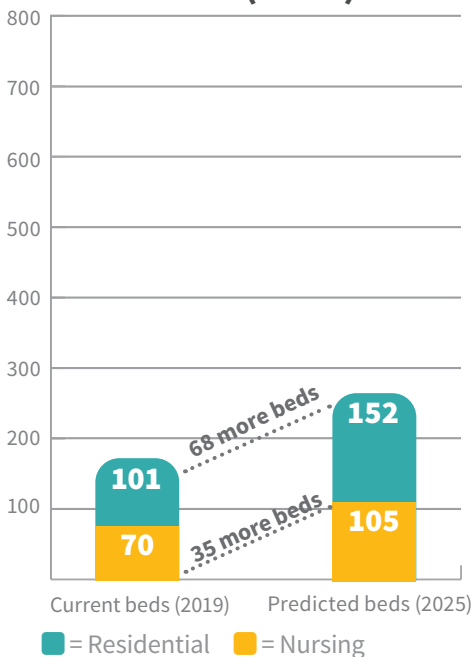


Cornwall Council Adult Social Care
NHS Kernow Clinical Commissioning Group (NHSK CCG)
Cornwall Partnership NHS Foundation Trust (CFT)

Care home bed utilisation



Care home beds available (2025)



● = Care homes



Falmouth/Penryn have...

1 community hospital

9 GP practices

6 NHS dental practices

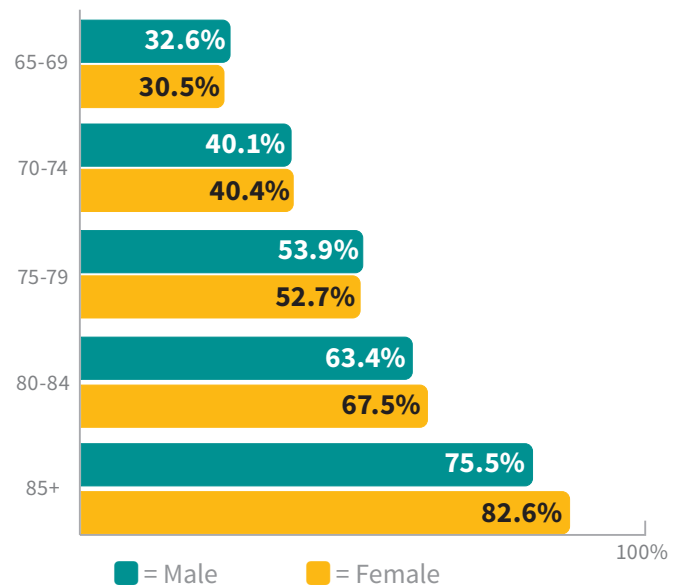
7 pharmacies

252

Extra Care units needed by 2025 to meet demand

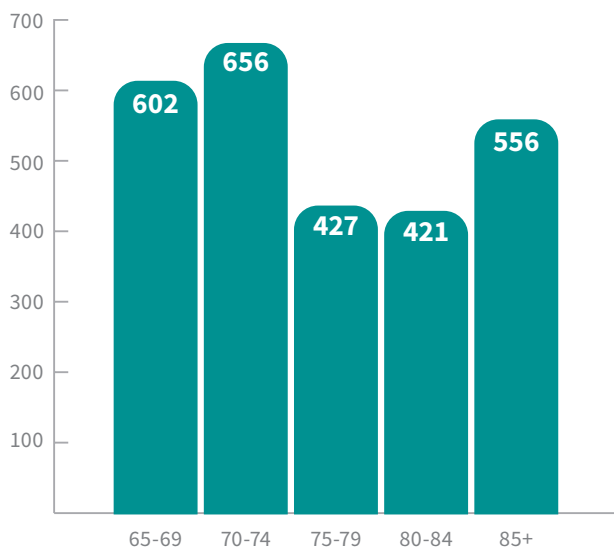
Limiting long term conditions

(% of population with limited day to day activities)



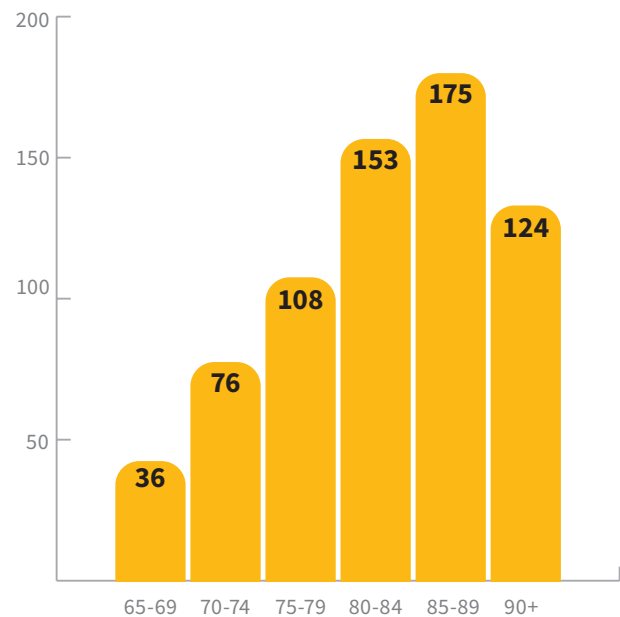
Predicted have a fall (2017)

People aged 65 and over



Predicted to have dementia (2017)

People aged 65 and over



If you would like this information in another format or language please contact:

Cornwall Council, County Hall,
Treyew Road, Truro, TR1 3AY

e: equality@cornwall.gov.uk

t: 0300 1234 100

