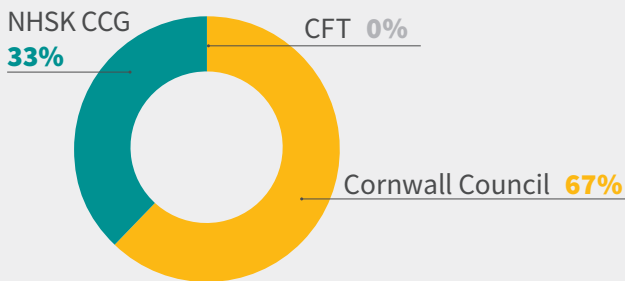


# Care Home Market Development

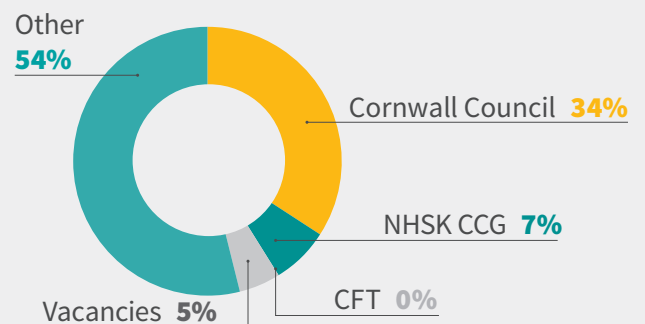
Area A:  
Truro  
Roseland

## Funding split by commissioner

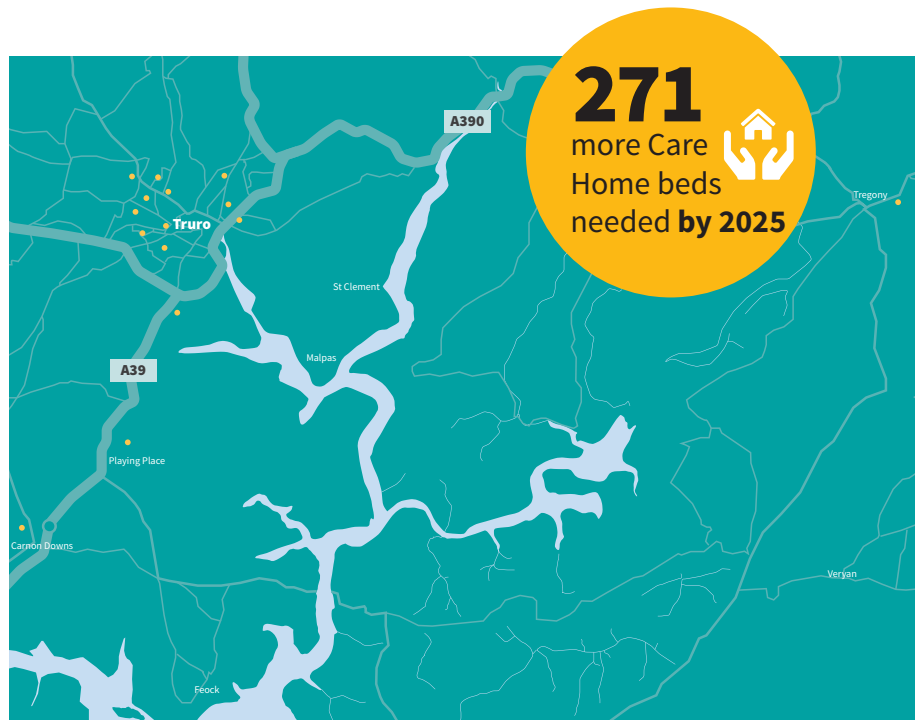
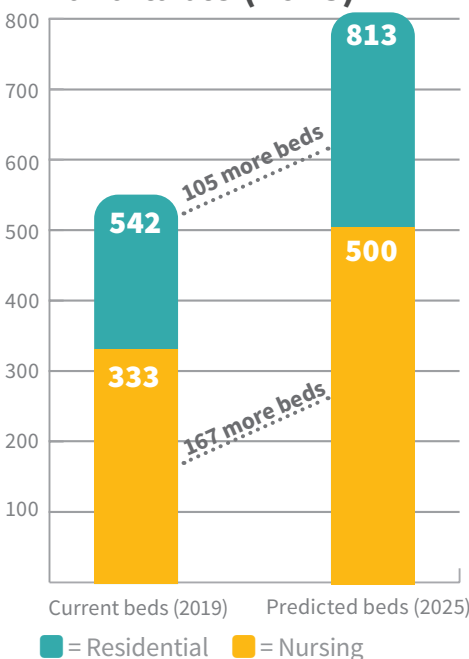


Cornwall Council Adult Social Care  
NHS Kernow Clinical Commissioning Group (NHSK CCG)  
Cornwall Partnership NHS Foundation Trust (CFT)

## Care home bed utilisation



## Care home beds available (2025)



● = Care homes




## Truro/Roseland have...

 **1** acute hospital

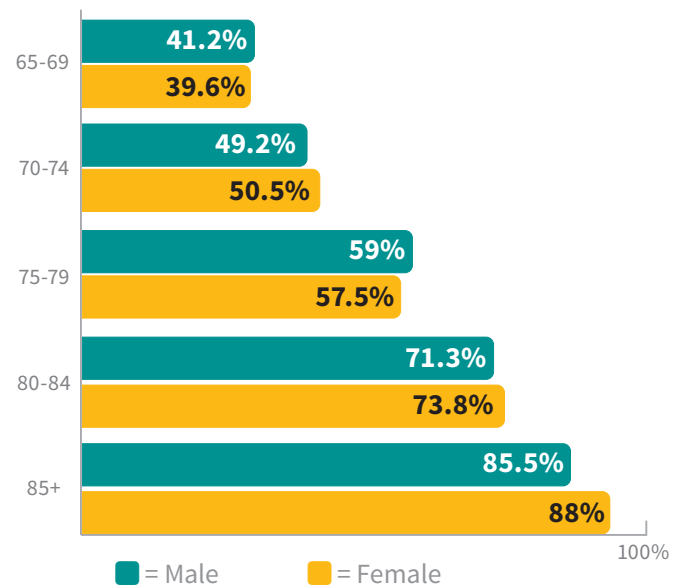
 **16** GP practices

 **11** NHS dental practices

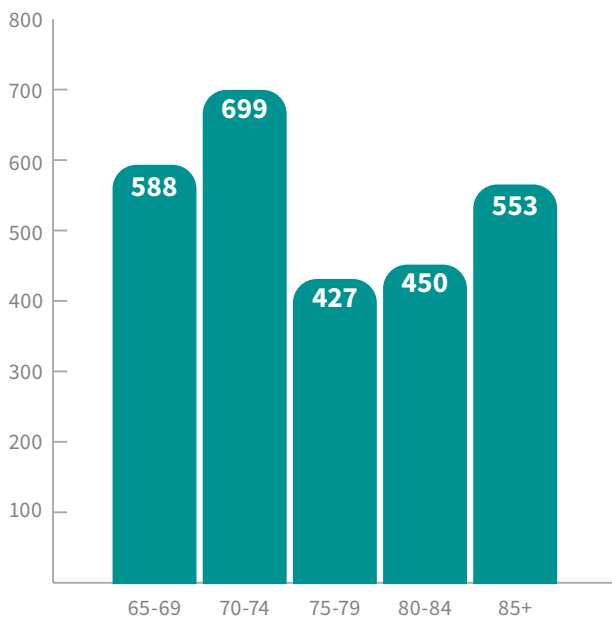
 **8** pharmacies

 **207**  
Extra Care units needed **by 2025**  
to meet demand (Truro only)

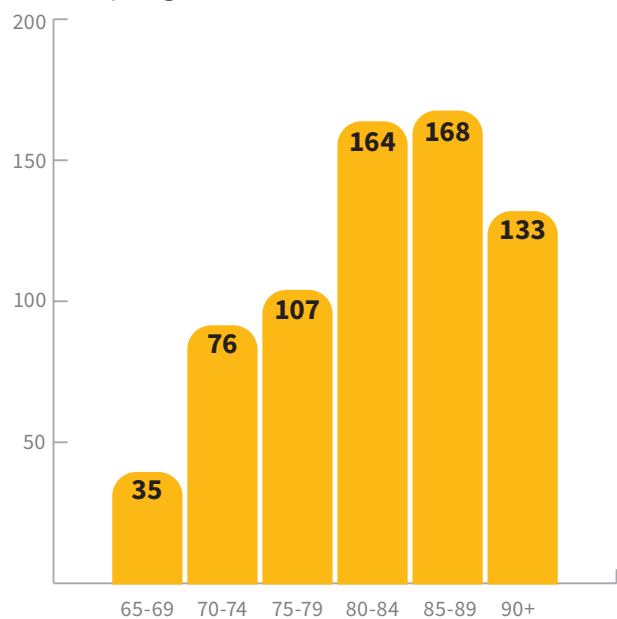
## Limiting long term conditions (% of population with limited day to day activities)



## Predicted have a fall (2017) People aged 65 and over



## Predicted to have dementia (2017) People aged 65 and over



If you would like this information in another format or language please contact:

Cornwall Council, County Hall,  
Treyew Road, Truro, TR1 3AY

e: [equality@cornwall.gov.uk](mailto:equality@cornwall.gov.uk)

t: 0300 1234 100

